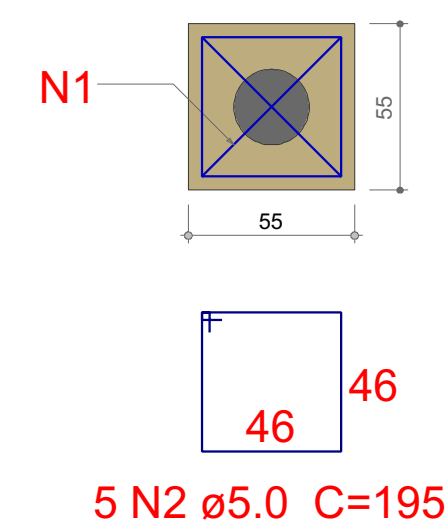
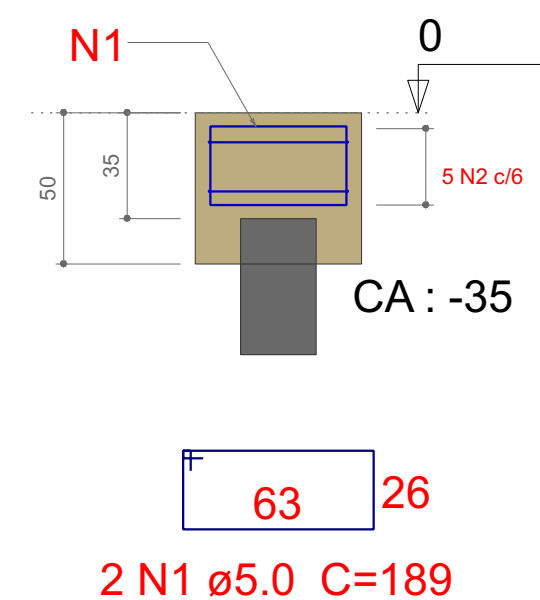


B2=B3=B5=B6=B8=B9=B11=B12=B13=B14=B16
=B17=B18=B21
1xC25 2

PLANTA
ESC 1:25

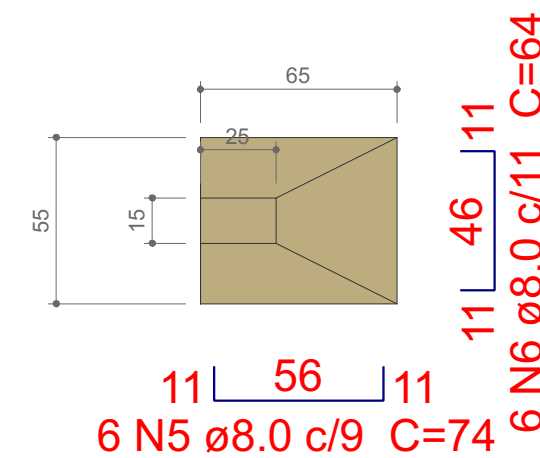


CORTE
ESC 1:25



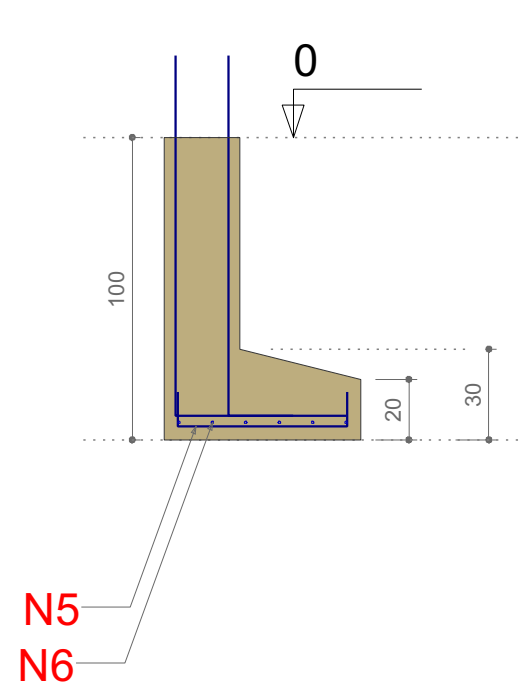
S1=S15=S19=S20

PLANTA
ESC 1:25



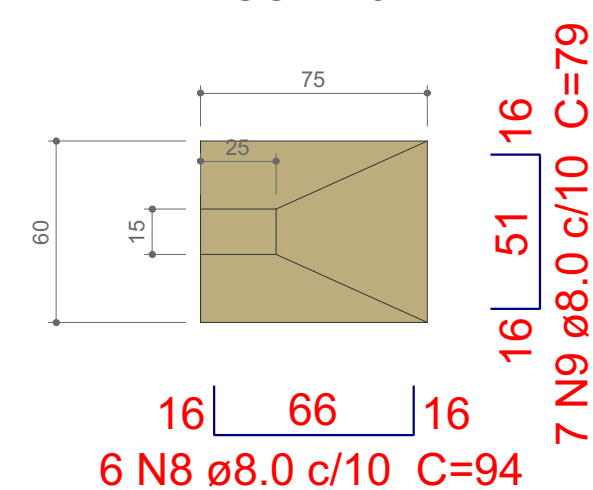
Solo compactado sobre a sapata
peso específico > 1600.00 kgf/m³

CORTE
ESC 1:25



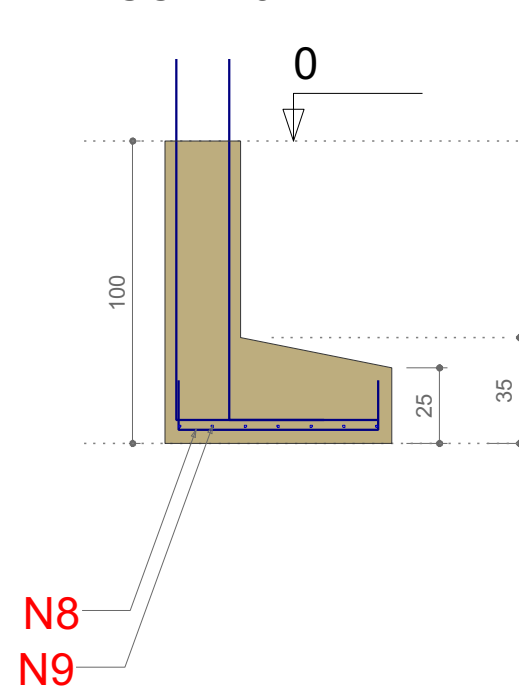
S4

PLANTA
ESC 1:25



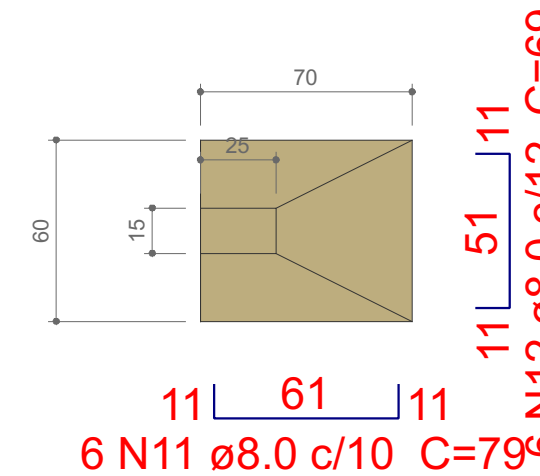
Solo compactado sobre a sapata
peso específico > 1600.00 kgf/m³

CORTE
ESC 1:25



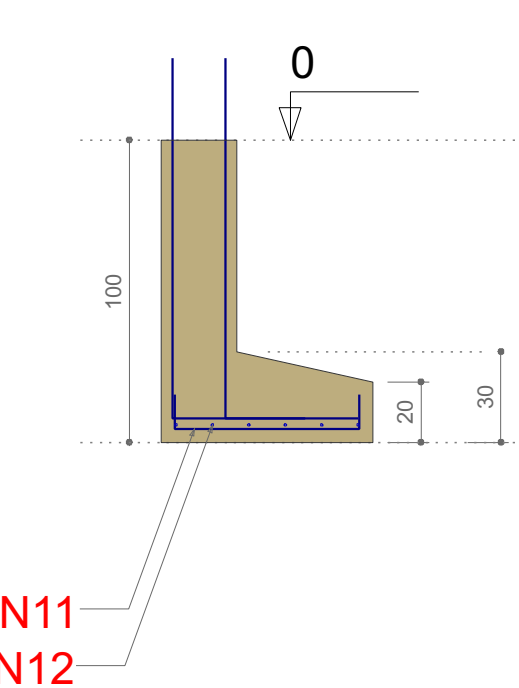
S7=S10

PLANTA
ESC 1:25



Solo compactado sobre a sapata
peso específico > 1600.00 kgf/m³

CORTE
ESC 1:25



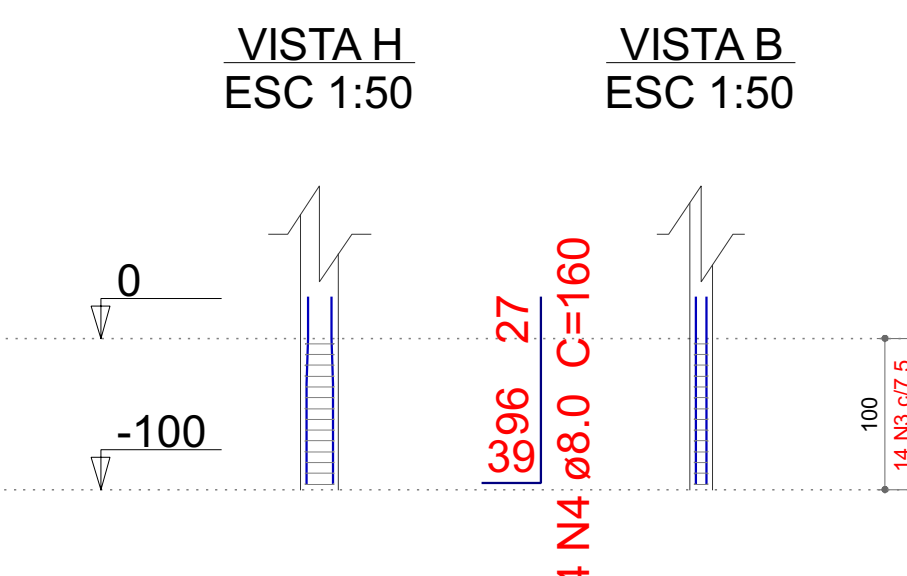
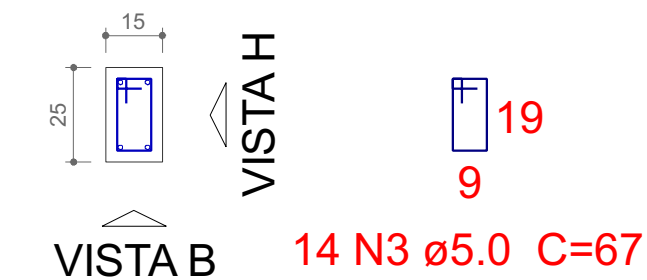
P1=P15=P19=P20

VISTA H
ESC 1:50

VISTA B
ESC 1:50

PAV TERREO - L1

SEÇÃO
ESC 1:20



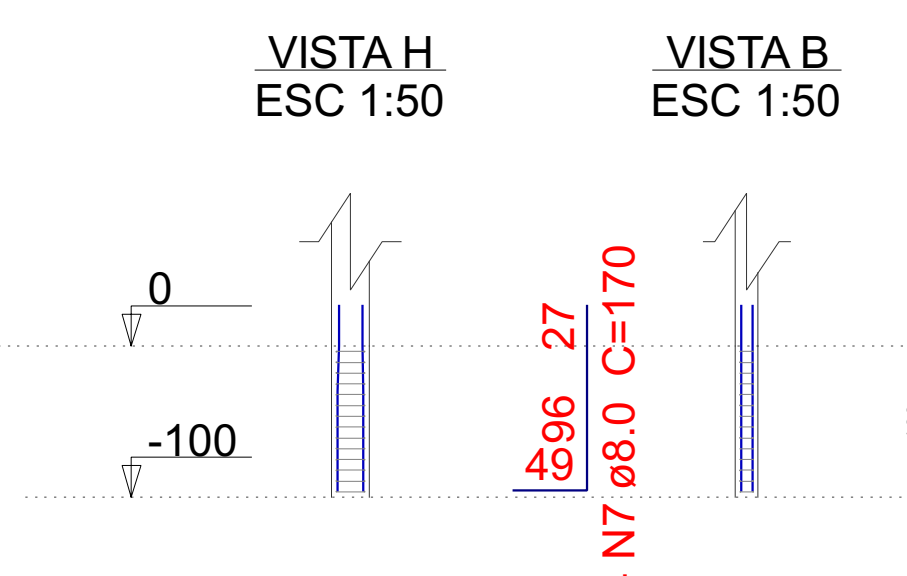
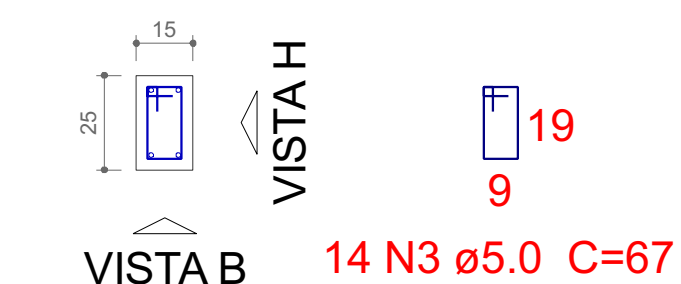
P4

VISTA H
ESC 1:50

VISTA B
ESC 1:50

PAV TERREO - L1

SEÇÃO
ESC 1:20



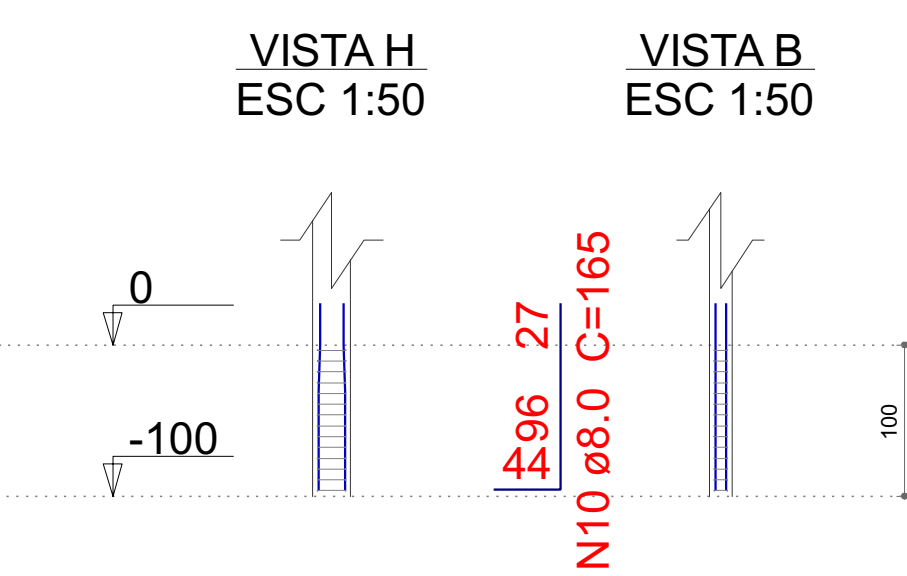
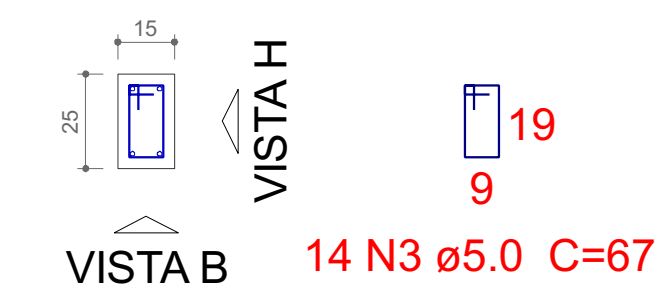
P7=P10

VISTA H
ESC 1:50

VISTA B
ESC 1:50

PAV TERREO - L1

SEÇÃO
ESC 1:20



Resumo do aço

AÇO	DIAM (mm)	C.TOTAL (m)	PESO (kg)
CA50	8.0	107.7	42.5
CA60	5.0	255.1	39.3
PESO TOTAL (kg)			
CA50	42.5		
CA60	39.3		

Volume de concreto (C-30) = 2.89 m³
Área de forma = 23.32 m²

APROVAÇÃO

Carimbo da Prefeitura Municipal:

ESTATÍSTICA DA OBRA:

Finalidade da obra:
Emissão inicial



Obra: Ampliação Corpo de Bombeiros

Local: LAR. DO SUL/Pr	Endereço da obra: Rua Barão do Rio Branco - 3º SGB	Folha: 5 / 9
Escala: INDICADA		Últimas Atualizações: 20/09/2023
Data: 20/09/2023	Proprietário: PREF. MUN. DE LARANJEIRAS DO SUL CNPJ. 76.205.970/0001-95 AV. HONÓRIO BABINSKI - PAÇO MUNICIPAL Nº 01 CEP. 85301-000 FONE (042) 3635-8100 LARANJEIRAS DO SUL/PR	
Desenho: WANDER		

FUNDAÇÕES E ESPERAS PAV TERREO

Resp. pr Projeto:	SECRETARIA DE OBRAS E URBANISMO FONES (042) 3635-8131 e 3635-8107	
-------------------	--	--